

# JI WALL 1000 SF

Insulated panels (PIR core)

MR023 / 1116



**JORISIDE**  
THE STEEL FUTURE  
MEMBER OF JORIS IDE GROUP



## Index

JI Wall 1000 SF	1
Description	2
External profiles	2
Weight and thermal performance	3
Materials	3
A1. External weather sheet	3
A2. Internal liner sheet	3
A3. Insulation core	3
Confidex® Guarantee by Tata Steel	4
Performance	5
Certifications, quality and durability	6
Construction details	7



*Joris Ide Ltd. is not responsible for printing errors and / or any differences between the images in this catalogue and the final product delivered. Joris Ide Ltd. reserves the right to modify the technical specifications at any time without prior notice.*

## JI Wall 1000 SF

Insulated panels (PIR core)

With an array of different finishes and colours the JI Wall 1000 SF is the perfect panel for Industrial , Commercial or even Residential applications.

This LPCB approved panel is used horizontally or vertically according to personal preferences.

The Joris Ide group has more than 3 decades of experience, processes 300.000 tonnes of steel per year, has 17 production sites over 8 countries with the help of more than 1000 employees. Joris Ide, your dedicated partner.



*JI Wall 1000 SF in a residential application.*



*JI Wall 1000 SF in a commercial application.*

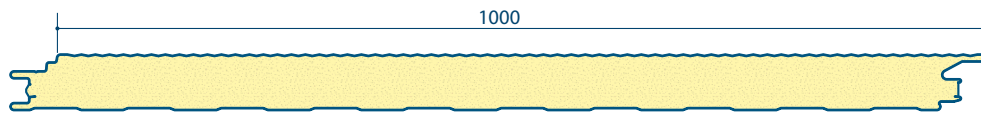


*JI Wall 1000 SF in an industrial application.*

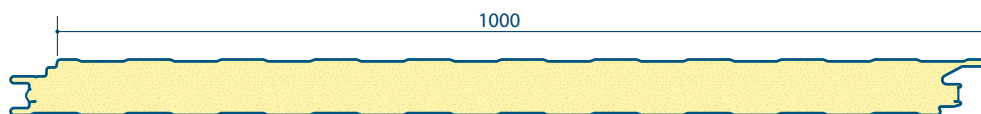
## Description

With the JI Wall 1000 SF, Joris Ide allows for an architectural solution by combining the horizontal or vertical placed panels with accessories in different aesthetic finishes, coatings and color throughout a wide range of external profiles. In this way the building can be designed as unique in its kind.

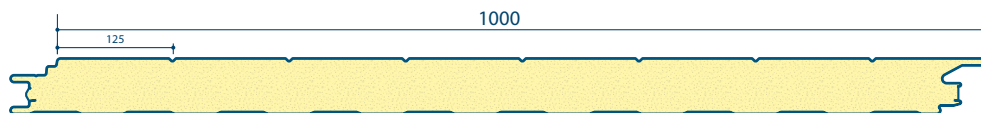
## External profiles



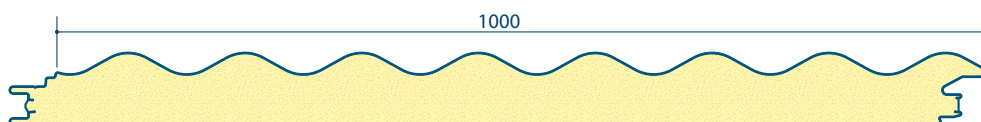
Microrib



Liner



Plank



Onduwall  
*(Only available in 80 mm core thickness)*



Smooth  
*(Under the approval of Joris Ide, depends on project details such as location, colours, span and minimum quantity.)*

## Weight and thermal performance

Core Thickness (mm)	60	80	100	120	150
U-value (W/m <sup>2</sup> K)	0,35	0,26	0,21	0,18	0,13
Weight (kg/m <sup>2</sup> )	11,79	12,59	13,39	14,19	15,39

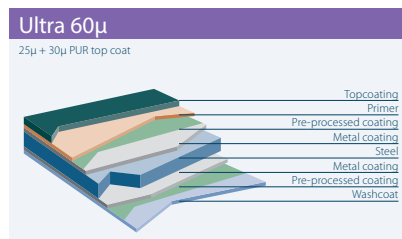
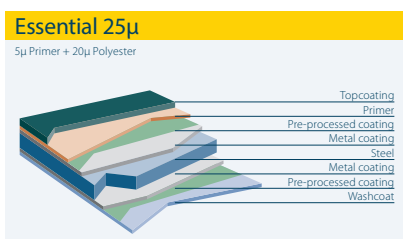
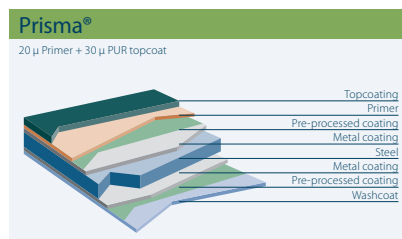
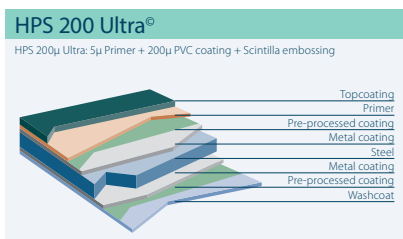
U-values are calculated in according to the method required by Part L2 (England and Wales) Building Regulations and Section 6 (Scotland) Technical Handbooks.

## Materials

### A1. External weather sheet

Joris Ide offers one of the widest ranges in coatings and colours which can be defined per project and building requirements. Please consult our color-flow brochure for detailed information.

*The Onduwall and JI Wall SF smooth are only available upon demand in limited colours / coatings, or HPS 200µ Anthracite Grey*



### A2. Internal liner sheet

Internal conditions of a building can vary; Joris Ide can offer a wide range to suit heavy-duty environments such as humidity and ammoniac. Please consult our colorflow brochure for detailed information.

- 15 µ Polyester RAL 9002 (standard)
- 25 µ Polyester
- Colorfarm 35µ
- PVC Foodsafe 150 µ PVC
- Aluminium
- HPS 200 µ

### A3. Insulation core

JI Wall 1000 SF insulated panels are made with a high thermal performance and environmental sustainable PIR foam with zero ozone depletion and a low global warming potential.



## Confidex® Guarantee by Tata Steel

For over 20 years the Confidex® Guarantee from Tata Steel has remained best in class. Confidex® is the product performance guarantee for Colorcoat HPS200 Ultra® and Colorcoat Prisma®, when used in an external conventional building envelope application namely roof and wall cladding using single skin, built-up or composite panel construction in industrial and commercial buildings. Confidex® offers the longest and most comprehensive guarantee for pre-finished steel in Europe.

### Key features include;

- Extended guarantee cover for up to 40 years on Colorcoat HPS200 Ultra® and up to 30 years on Colorcoat Prisma®.
- No requirement for annual inspections or maintenance to validate the guarantee.
- Covers cut edges produced under factory controlled conditions for the entire guarantee period.
- Backed by years of worldwide product testing and real world experience.
- Provides cover for roof pitches down to 1° and no distinction between different roof pitches above that.
- Offered directly to the building owner and provides a contractual relationship between Tata Steel and the building owner.
- Fully transferable should building ownership change.
- Helps reduce the level of risk for each part of the supply chain.
- Quick and simple online registration form.

With Confidex® registration



Without Confidex® registration



### Other warranties

Whilst Confidex® has always been restricted to the weathering performance of the external cladding, Tata Steel has recognised the growing emergence of demanding internal environment projects, such as energy from waste plants, and may offer a non-Confidex® warranty on a case by case basis for Colorcoat HPS200 Ultra® used internally.

Application specific warranties are also available for non-standard cladding applications; i.e residential roofs, flashings and sectional roller shutter doors.

### Regions covered by the Confidex® Guarantee



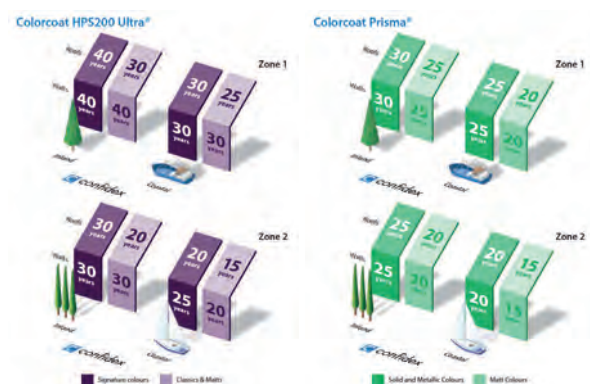
#### KEY

- Northern Europe – Zone 1
- Southern Europe – Zone 2
- For areas outside of Confidex® zones please contact Tata Steel for more information.

### Notes

- Figures under the Coastal heading are for buildings within 1 km of any coast.
- Full terms and conditions of the Confidex® Guarantee are on the online application form, available from [www.colorcoat-online.com/registration](http://www.colorcoat-online.com/registration)
- Confidex® must be registered within 3 months of the building completion date for the guarantee to be valid.
- The Confidex® Guarantee periods on the diagram above are applicable to Zone 1 and Zone 2. For more information visit [www.colorcoat-online.com/confidexmap](http://www.colorcoat-online.com/confidexmap)

*Colorcoat HPS200 Ultra, Colorcoat Prisma, Confidex are trademarks of Tata Steel UK Limited.*



## Performance

## Environmental

The JI Wall 1000 SF corresponds to the BRE Global Green Guide online generic specification Coated steel composite profiled panel with pentane blown PUR/PIR insulation and steel liner on steel support, structural steel frame with no internal finish (ref. 806600001) which achieves a summary rating of A+ within external wall construction. The production facility is ISO 14001 certified.

## Fire

The external and internal faces of the panel are Class 0 according to the Building Regulations when tested to BS476: Parts 6: 1989 and Part 7: 1987. The JI Wall 1000 SF has a LPCB (Loss Prevention Certification Board EXT-B Grade (certificate No : 700a to LPS181 : Part 1 : Issue 1 ) *Only applies to JI Wall 1000 SF in Microrib, Liner profile or Plank profile*

Panel	Orientation		Gauge (mm)	Fire resistance*		Grade	Core	LPCB
	Vertical	Horizontal		Integrity (min)	Insulation (min)			
JI Wall 1000 SF	●	●	60-120	-	-	EXT-B	PIR	700a/12
JI Wall 1000 SF	●		60-120	61	20	EXT-A15	PIR	700a/13
JI Wall 1000 SF	●	●	60-120	30	15	EXT-A15	PIR	700a/14

\* Please check [www.redbooklive.com](http://www.redbooklive.com) for notes on installation.

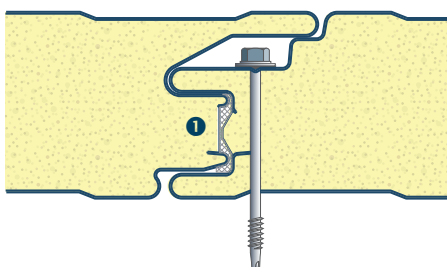
## Acoustic

Hz	125	250	500	1K	2K	4K
SRI 60 mm	12	12	15	17	35	53
SRI 80 mm	15	18	22	25	25	52
SRI 100 mm	15	18	21	24	27	52

For different thicknesses, please contact our technical team.

## Seals

The JI Wall 1000 SF PIR comes standard with a factory applied seal in the side lap (fig.1-1). Additional seals might be applied on site depending on condition.



1. Seal in the side lap

## Dimensions and tolerances

Minimum length : 2,50 m – Maximum length : 14 m (shorter lengths possible upon demand)

Length < 3000 mm	± 5 mm
Length > 3000 mm	± 10 mm
Width (mm)	± 2 mm
Gauge (mm)	± 2 mm

Product tolerances [ According to EN 14509 ]

## Certifications, quality and durability

The JI Wall 1000 SF is manufactured according to the ISO 9001 and are assembled from high-quality raw materials which are selected by a detailed supply chain management and in-house laboratory controls. The product is produced to the highest quality standards such as EN 14509. The Joris Ide plant in Zwevezele is ISO 14001 certified. The JI Wall 1000 SF carries the product conformity according to the European legislation and therefore all packs are CE-marked and carry the Declaration of Performance.



Assessed to ISO 9001  
LPCB ref. N° 700



Assessed to ISO 14001  
LPCB ref. N° 700-EMS



LPS1181: Part 1: Issue 1  
Cert/LPCB 700a



## Accessories

Joris Ide can supply accessories such as repartition plates, flashings, top hats and panel bearers.

## Maintenance composite panels

Joris Ide advises to do an annual inspection of the panels and to carry out any remedial work identified during inspection.

The maintenance & cleaning frequency is dependant on the application environment and actual pollution conditions of the composite panel. Exterior used panels need to be cleaned once per year. For interior used panels, the cleaning is dependant on the actual pollution conditions.

The cleaning of building walls should be made from up to down manually or by suitable cleaning facilities. Please notice that any cleaner which includes corrosive material is forbidden to be used for the cleaning. Specific cleaning processes as follow:

- Use plenty of clean water to wash the panel's surface;
- Use soft cloth with diluted detergent to wipe the panel's surface softly;
- Use clean water again to wash the stains off;
- Check the panel's surface and special cleaning with detergent is needed, if some parts are still not clean;
- Use clear water to wash the panels' surface till all stains have been washed out.

### Note:

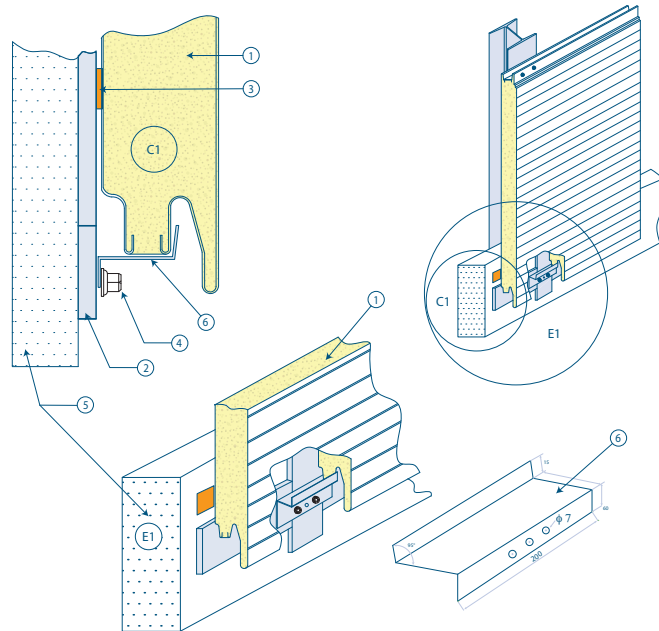
Please don't clean if the panel's surface is hot (over 40 °C) because too fast volatility of the water will do harm to the coating. Please note especially that suitable detergent should be chosen. Generally neutral detergent is OK. Please don't use strong alkaline detergent, such as potassium hydroxide, sodium hydroxide and also please don't use strong acid detergent, abrasive detergent and paint soluble detergent. We would suggest to clean a small part as an experiment before carrying out thorough cleaning of the whole project.



## Construction details

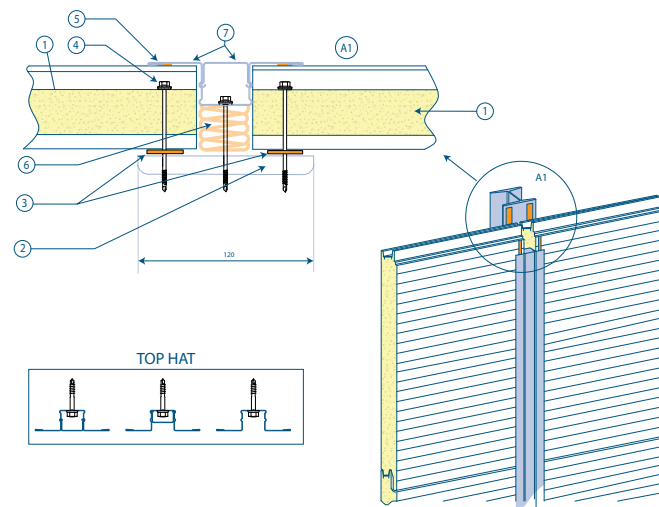
### Drip Detail

1. JI Wall 1000 SF PIR LPCB approved
2. Galvanized steel support with joints sealed
3. Butyl seal for air tightness
4. Fixing
5. Concrete wall
6. Panel bearer to be placed max. each 1500 mm starting max. 150 mm from the sides.



### Joint Detail

1. JI Wall 1000 SF PIR LPCB approved
2. Steelwork
3. Butyl tape
4. Fixing with washer
5. Butyl rubber sealant site applied
6. Site applied insulation to fill up space
7. Top hat and insert





*Commercial project*



*Residential usage*



*Corner detail*



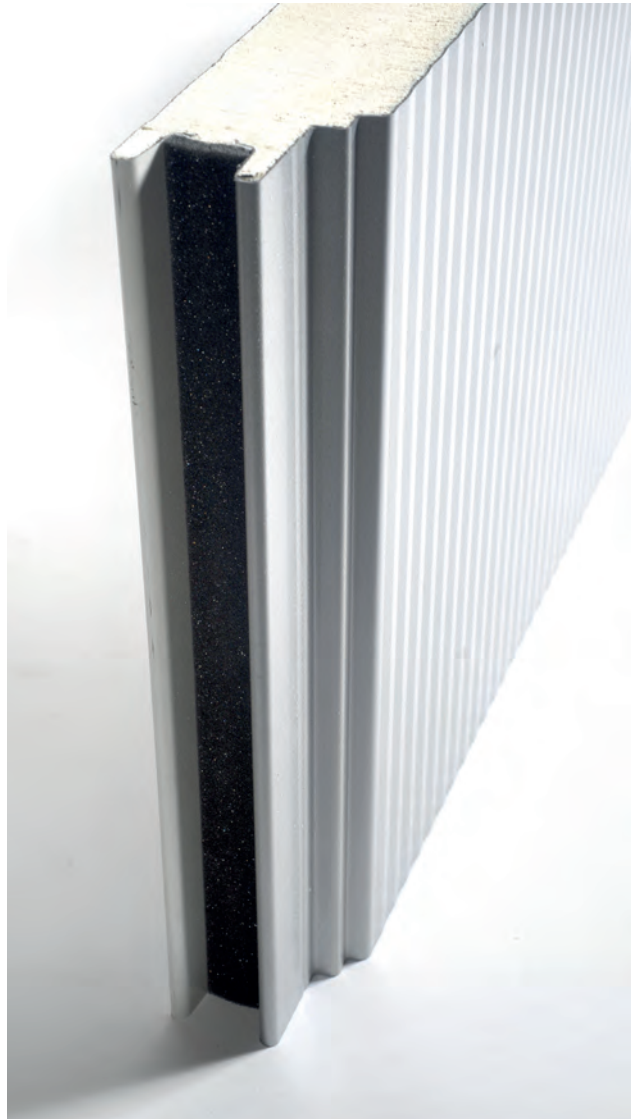
*Industrial realisation using the JI Wall 1000 SF*



*Structural construction*



*Residential construction*



*Detail of a panel*



*Use in industrial buildings*





**Joris Ide Ltd.**

A9, Elmbridge Court, Gloucester GL3 1JZ, United Kingdom  
T. +44 (0)1452 412 069 F. +44 (0)1452 358 025 [sales@jorisode.co.uk](mailto:sales@jorisode.co.uk)

**Joris Ide nv/sa**

Hille 174, B-8750 Zwevezele, België  
T. +32 (0) 51 61 07 77 F. +32 (0) 51 61 07 79 [info@jorisode.be](mailto:info@jorisode.be)