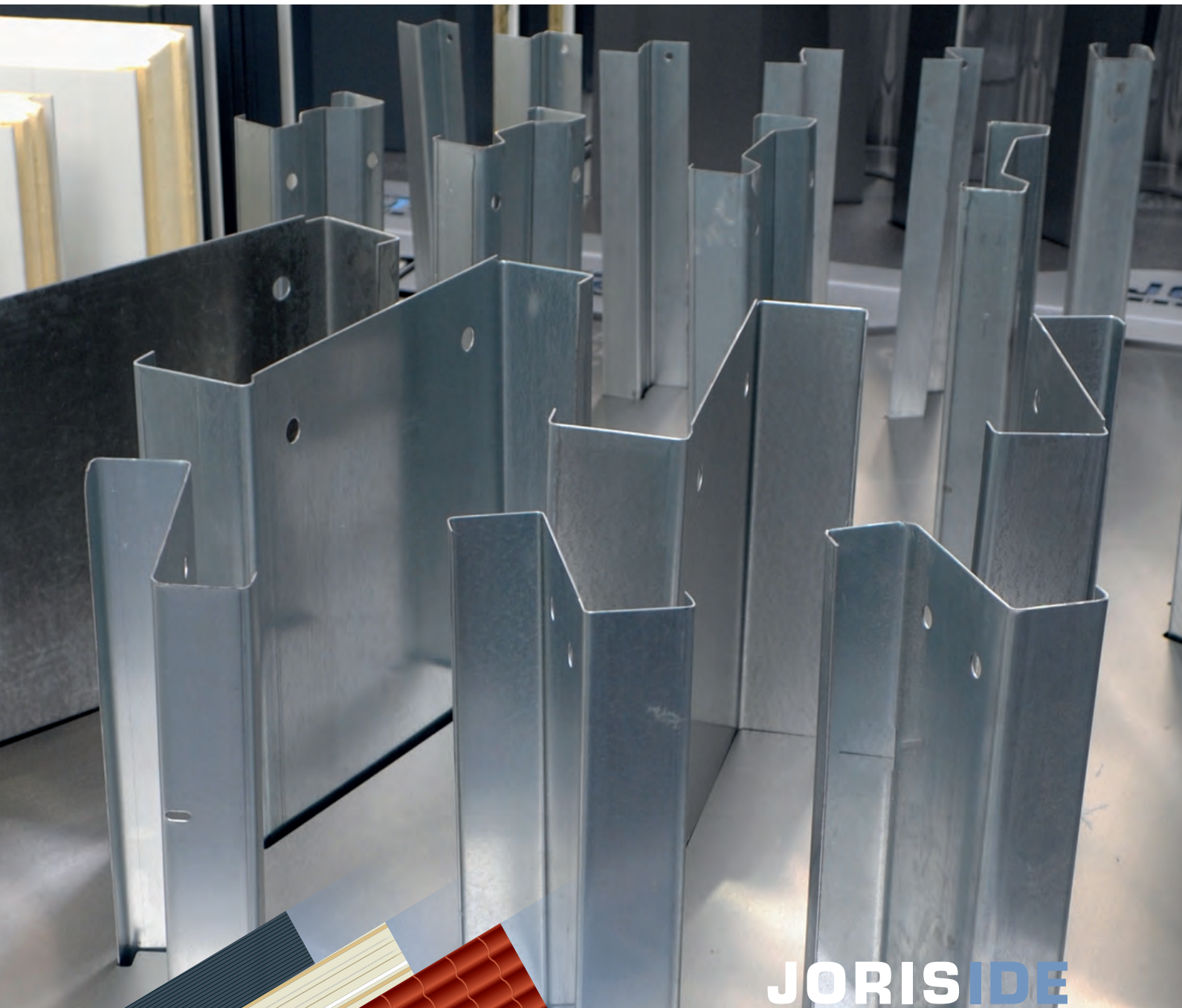


PURLINS & RAILS

Galvanised profiles

MR045 / 1116



JORISIDE
THE STEEL FUTURE
MEMBER OF JORIS IDE GROUP



Index

Purlins	2
Z-purlins	2
Σ -purlins	3
Sleeves	4
Z-sleeve	4
Σ -sleeve	5
Eave beam	6
Eave beam profile	6
Cleats	7
Bolted cleat for type Z140 to Z400	7
Bolted cleat for type Σ 140 to Σ 230	7
Sagbars	8
Sagbars with welded plates for Z300-Z350-Z400	8
Sagbars with crimped end pieces for Z140 to Z250 / Σ 140 to Σ 2300	8
Tie-wires	9
Single & double tie-wires	9
Secondary fixings	10
C-profiles	10
Ω -purlins	11
Secondary fixings	12
Fixing profile 30/40/50/60/70	12
L-profile 50/100/2	
L-assembly/rail 50/100/4	14
Roof and wall trimmer beam	15
Folding	16
Example of work drawing	18



Joris Ide NV. is not responsible for printing errors and / or any differences between the images in this catalogue and the final product delivered. Joris Ide NV reserves the right to modify the technical specifications at any time without prior notice.

PURLINS & RAILS

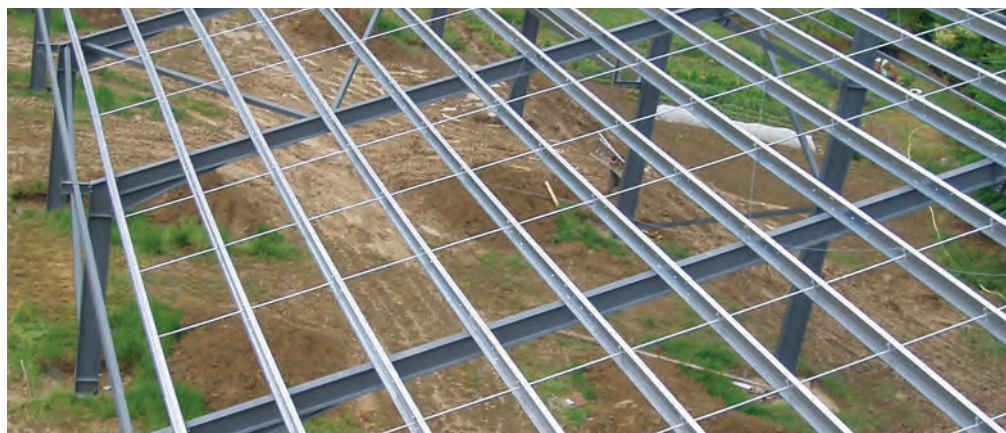
Galvanised profiles

Due to the continuous investment in machinery, Joris Ide are able to offer you a wide range of purlins & rails which give a detailed choice both from an aesthetical or technical point of view.

To offer you the best service, Joris Ide has combined these profiles into built-up systems matching building regulations.

In these built-up systems, we, not only offer you our in-house produced spacer bar, but also all required components.

The Joris Ide group has more than 3 decades of experience, processes 300.000 tonnes of steel per year, has 17 production sites over 8 countries with the help of more than 1000 employees. Joris Ide, your dedicated partner..



Agricultural construction.



Industrial construction.



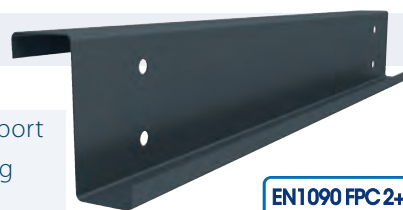
Multiple possibilities to construct the roof for every need.

Purlins

Z-purlins

Production site Zwevezele, Belgium.

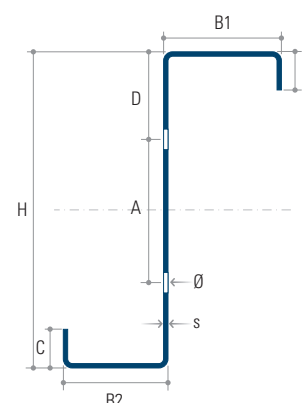
The Z-purlins are cold-formed galvanised profiles, are the ideal and solid support for being used in the construction industry for an unlimited range of cladding and roofing options.



Technical Information

	h	B1	B2	C	A	D	Ø
	mm	mm	mm	mm	mm	mm	mm
Z 140	140	65,50	59,50	22	70,00	36,00	14
Z 160	160	65,50	59,50	22	70,00	46,00	14
Z 180	180	65,50	59,50	22	81,50	50,25	14
Z 200	200	65,50	59,50	22	100,00	51,00	14
Z 220	220	65,50	59,50	22	120,00	51,00	14
Z 250	250	79,00	68,00	22	150,00	51,50	18
Z 300	300	94,00	86,00	30	190,00	56,50	18
Z 350	350	94,00	86,00	30	240,00	56,50	18
Z 400	400	94,00	86,00	30	290,00	56,50	18

	Weight kg/m					
Gauge	1,5 mm	1,75 mm	2 mm	2,5 mm	3 mm	3,5 mm
Z 140	3,50		4,55	5,65		
Z 160	3,70		4,90	6,00		
Z 180	4,00		5,20	6,40		
Z 200	4,20		5,50	6,80		
Z 220	4,40		5,85	7,20	3,00	
Z 250	5,10	5,85	6,60	8,40	9,85	11,70
Z 300			8,15	10,15	12,20	14,20
Z 350			8,95	11,20	13,40	15,60
Z 400			9,90	12,50	14,80	17,30



Characteristics

Length	Perforated according to your requirements
Steel quality	S280 GD (Z140 - Z220) S350 GD (Z250 - Z300 - Z350 - Z400)
Finish	Galvanisation according to Sendzimir principle, 275 gr/m ² or 600 gr/m ² Non-oiled or similar hot-dip galvanisation EN 1461

Reference standards

Galvanised steel EN 10346 S280GD Z275 and EN10346 S350GD Z275*

* For detailed specification contact our technical department.

Purlins

Σ-purlins

Production site Zwevezele, Belgium.

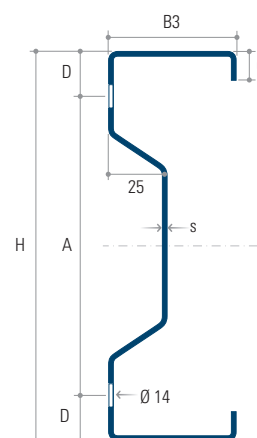
The Σ-purlins are cold-formed galvanised profiles, are the ideal and solid support for being used in the construction industry for an unlimited range of cladding and roofing options.



Technical Information

	h	B3	D	A	C	Ø
	mm	mm	mm	mm	mm	mm
Σ 140	140	56	20	100	15	14
Σ 170	170	56	20	130	15	14
Σ 200	200	56	20	160	15	14
Σ 230	230	56	20	190	15	14

	Weight kg/m		
Gauge	1,5 mm	2 mm	2,5 mm
Σ 140	3,50	4,55	5,65
Σ 170	3,80	5,10	6,30
Σ 200	4,20	5,50	6,80
Σ 230	4,50	6,00	7,50



Characteristics

Length	Perforated according to your requirements
Steel quality	S350 GD
Finish	Galvanisation according to Sendzimir principle, 275 gr/m ² or 600 gr/m ² Non-oiled or similar hot-dip galvanisation EN 1461

Reference standards

Galvanised steel EN 10346 S280GD and EN10346 S350GD Z275*

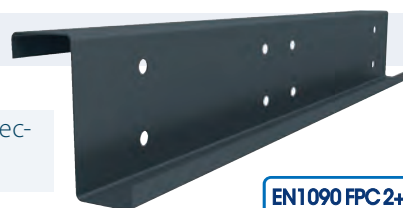
* For detailed specification contact our technical department.

Sleeves

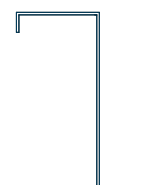
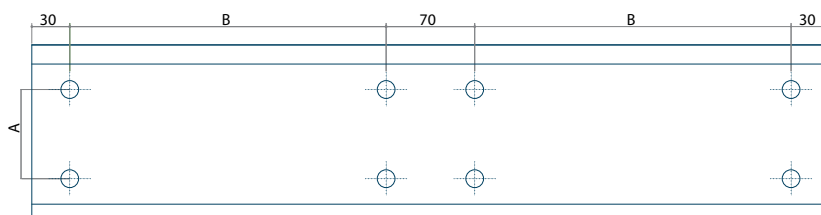
Z-sleeve

Production site Zvevezele, Belgium.

Sleeves are cold-formed galvanised profiles. They are used to make the connection between two Z-purlins of the same size.



Technical Information



	A	B	Ø	Length	Gauge					
	mm	mm	mm	mm	1,50 mm	1,75 mm	2,00 mm	2,50 mm	3,00 mm	3,50 mm
Z140	70,00	250	14	630	●		●	●		
Z160	70,00	300	14	730	●		●	●		
Z180	81,50	350	14	830	●		●	●		
Z200	100,00	400	14	930	●		●	●		
Z220	120,00	500	14	1130	●		●	●	●	
Z250	150,00	700	18	1530	●	●	●	●	●	●
Z300	190,00	900	18	1930			●	●	●	●
Z350	240,00	1000	18	2130			●	●	●	●
Z400	209,00	1000	18	2530			●	●	●	●

Characteristics

Length	Perforated according to your requirements
Steel quality	S280 GD (Z140 - Z220) S350 GD (Z250 - Z300 - Z350 - Z400)
Finish	Galvanisation according to Sendzimir principle, 275 gr/m ² or 600 gr/m ² Non-oiled or similar hot-dip galvanisation EN 1461

Reference standards

Galvanised steel EN 10346 S280GD Z275 and EN10346 S350GD Z275*

* For detailed specification contact our technical department.

Sleeves

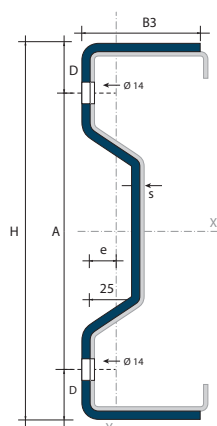
Σ-sleeve

Production site Zwevezele, Belgium.

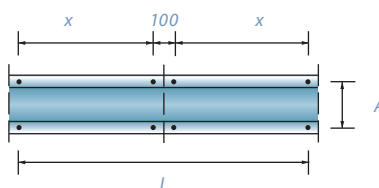
Σ-sleeves are cold-formed galvanised profiles. They are used to make the connection between two Σ-purlins of the same size.



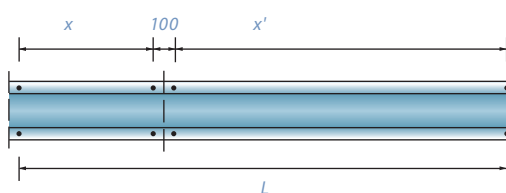
Technical Information



Symmetric



Asymmetric



	Gauge	A	X	X'	L _{sym}	L _{asym}
	mm	mm	mm	mm	mm	mm
Σ 140	2,50	100	270	540	700	970
Σ 170	3,00	1320	320	640	800	1120
Σ 200	3,00	160	420	840	1000	1420
Σ 230	3,00	190	520	1040	1200	1720

Characteristics

Length	Perforated according to your requirements
Steel quality	S350 GD
Finish	Galvanisation according to Sendzimir principle, 275 gr/m ² or 600 gr/m ² Non-oiled or similar hot-dip galvanisation EN 1461

Reference standards

Galvanised steel EN 10346 S280GD and EN10346 S350GD Z275*

* For detailed specification contact our technical department.

Eave beam

Eave beam profile

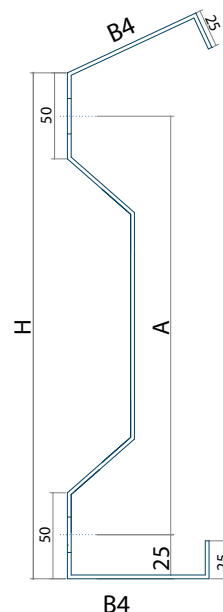
Production site Zwevezele, Belgium.

Eave beams are cold-formed galvanised profiles. They are used to make the connection between roof and wall parts of the construction.



Technical Information

	H	t (mm)	B4	A (mm)	E	Gauge
Eave 140	70,00	40	130	70	28	6
Eave 160	70,00	50	140	70	28	6
Eave 180	81,50	55	155	70	28	6
Eave 200	100,00	55	175	70	28	6
Eave 220	120,00	55	195	70	28	6
Eave 250	150,00	60	245	70	40	10
Eave 300	190,00	60	285	70	40	10
Eave 350	240,00	60	340	70	40	10
Eave 400	290,00	60	390	70	40	10



Characteristics

Length	Maximum length 12 m, perforated according to your requirements
Steel quality	S350 GD
Finish	Galvanisation according to Sendzimir principle, 275 gr/m ² or 600 gr/m ² Non-oiled or similar hot-dip galvanisation EN 1461

Reference standards

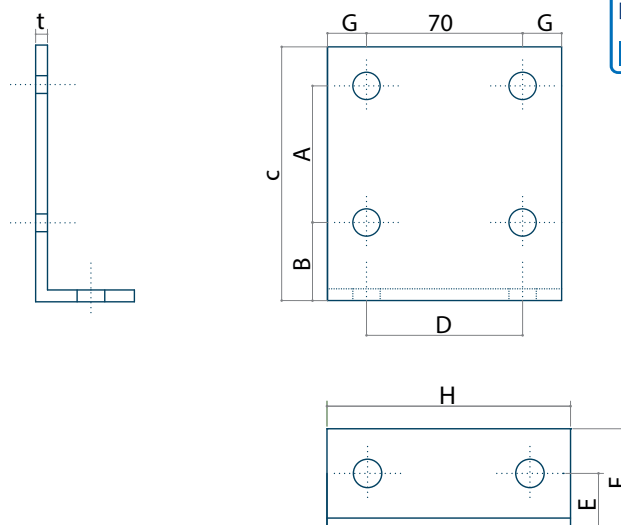
Galvanised steel EN 10346 S280GD and EN10346 S350GD Z275*

* For detailed specification contact our technical department.

Cleats

Bolted cleat for type Z140 to Z400

Production site Zwevezele, Belgium.

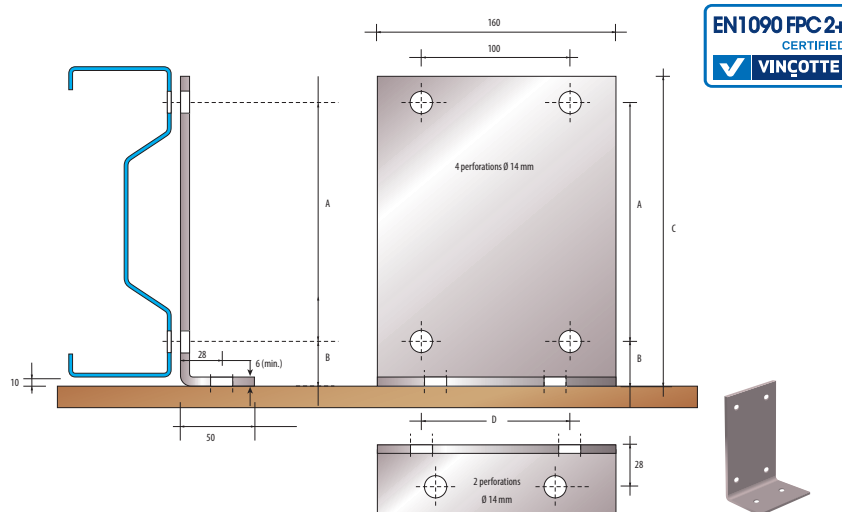


	A	B	C	D	E	F	G	H	Ø	Gauge
Z140	70,00	40	130	70	28	50	25	120	14	6
Z160	70,00	50	140	70	28	50	25	120	14	6
Z180	81,50	55	155	70	28	50	25	120	14	6
Z200	100,00	55	175	70	28	50	25	120	14	6
Z220	120,00	55	195	70	28	50	25	120	14	6
Z250	150,00	60	245	70	40	75	35	140	18	10
Z300	190,00	60	285	70	40	75	35	140	18	10
Z350	240,00	60	340	70	40	75	35	140	18	10
Z400	290,00	60	390	70	40	75	35	140	18	10

The value's in column D are changeable on demand.

Bolted cleat for type Σ140 to Σ230

Production site Zwevezele, Belgium.



	A	B	C	D
Σ140	100	30	148	80
Σ170	130	30	178	80
Σ200	160	30	208	80
Σ230	190	30	238	80

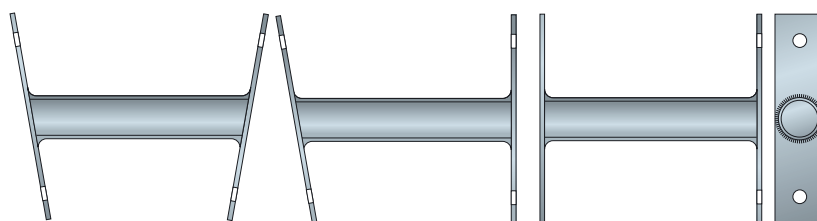
Characteristics

Steel quality S355JR
Finish Galvanised

Sagbars

Sagbars with welded plates for Z300-Z350-Z400

Production site Zwevezele, Belgium.



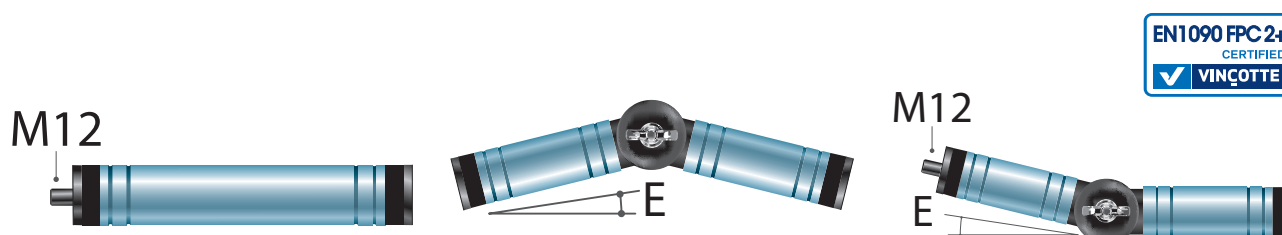
Characteristics

Detail galvanised tube, diameter 30 x 1.25 mm
Welded plate at each end with 2 perforations Ø 18 mm

Custom manufactured

Sagbars with crimped end pieces for Z140 to Z250 / Σ140 to Σ2300

Production site Zwevezele, Belgium.



Characteristics

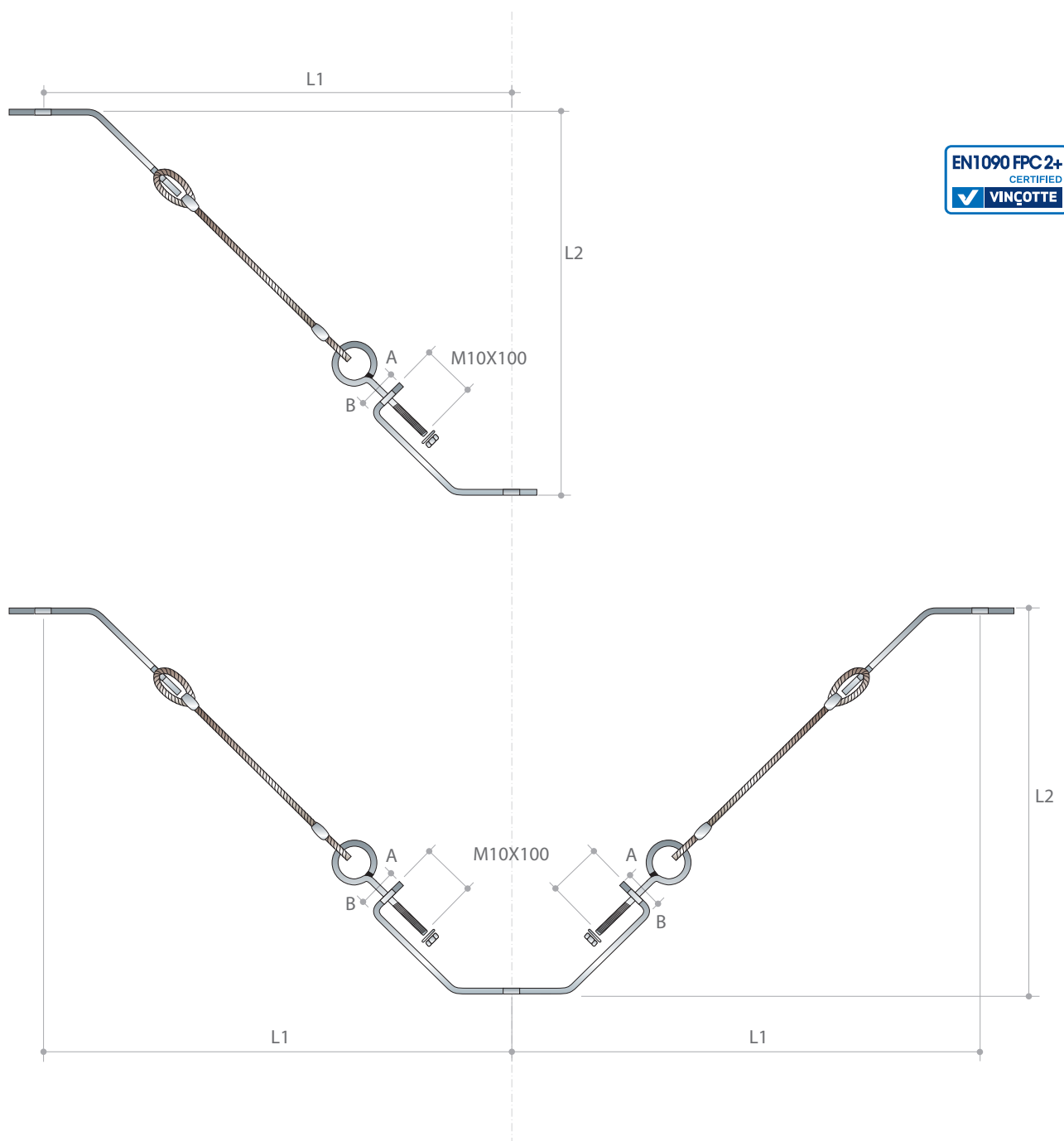
Detail galvanised tube, diameter 30 x 1.25 mm
Nylon end pieces
External M12 thread on one side
Internal M12 thread on other side

Custom manufactured

Tie-wires

Single & double tie-wires

Production site Zwevezele, Belgium.



Characteristics

Detail

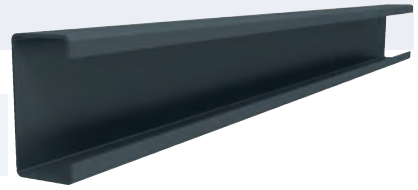
Simply give lengths L1 and L2 to order tie wires.
L2 = spacing between purlins - gauge of cleat.
The tie wires prevent the flexion of the profiles across the roof or cladding.

Secondary fixings

C-profiles

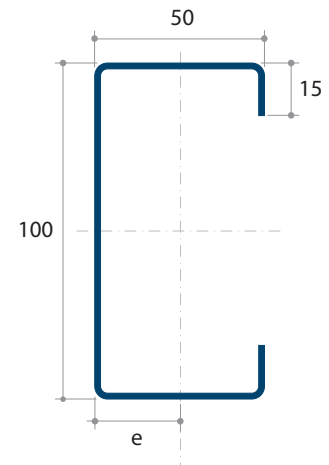
Production site Zwevezele, Belgium.

C-profiles are cold-formed galvanised profiles used as secondary fixings in a structural system.



Technical Information

Gauge	Weight	I_x	I_y	W_x	W_y	e
mm	kg/m	cm ⁴	cm ⁴	cm ³	cm ³	mm
1,5	2,60	55,35	13,90	11,40	4,42	18,30
2,0	3,45	70,07	16,60	14,01	5,28	18,57
2,5	4,25	88,27	19,80	17,65	6,28	18,44



Characteristics

Length	Standard lengths of 5000 mm and 6000 mm, made-to-measure up to 12 m
Steel quality	S280 GD
Finish	Galvanisation according to Sendzimir principle, 275 gr/m ² or 600 gr/m ² Non-oiled or similar hot-dip galvanisation EN 1461

Reference standards

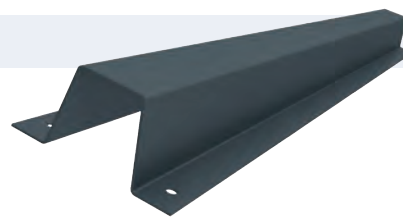
Galvanised steel EN 10346 S280GD Z275

Secondary fixings

Ω-purlins

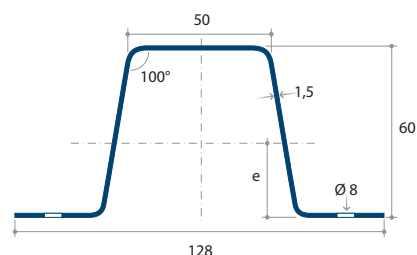
Production site Zwevezele, Belgium.

The Omega profile is a cold-formed galvanised profile designed to provide secondary support.



Technical Information

Gauge	Weight	I_x	I_y	W_x	W_y	e
mm	kg/m	cm ⁴	cm ⁴	cm ³	cm ³	mm
1,50	2,60	18,40	19,60	5,78	3,69	28,30
2,00	3,45	23,60	25,20	7,64	4,80	28,10



Characteristics

Length	Standard lengths of 4030 mm, 5030 mm and 6030 mm, perforated every 1000 mm
Steel quality	S280 GD
Finish	Galvanisation acc. to Sendzimir principle, 275 gr/m ² or 600 gr/m ² Non-oiled or similar hot-dip galvanisation EN 1461

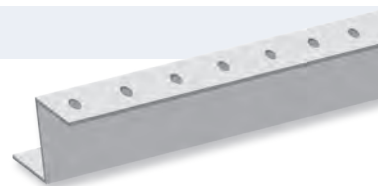
Reference standards

Galvanised steel EN 10346 S280GD Z275

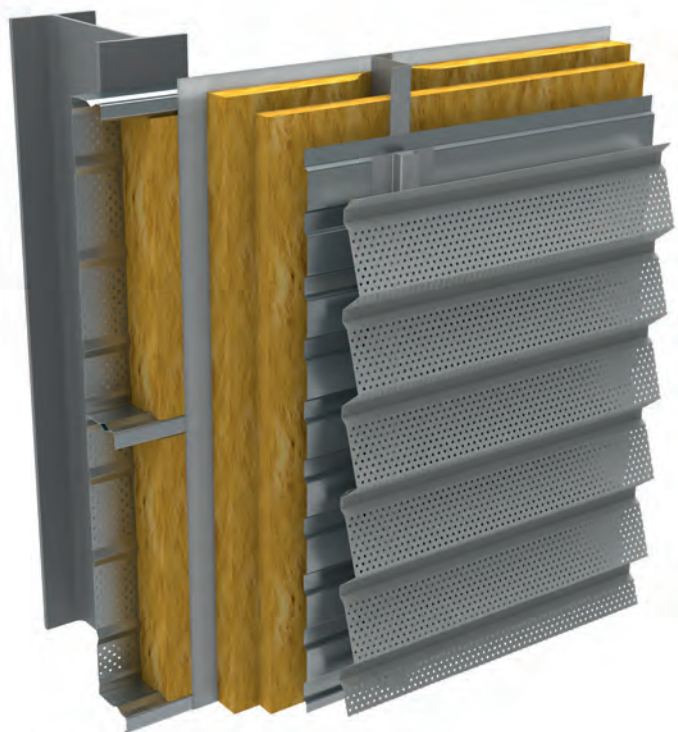
Secondary fixings

Fixing profile 30/40/50/60/70

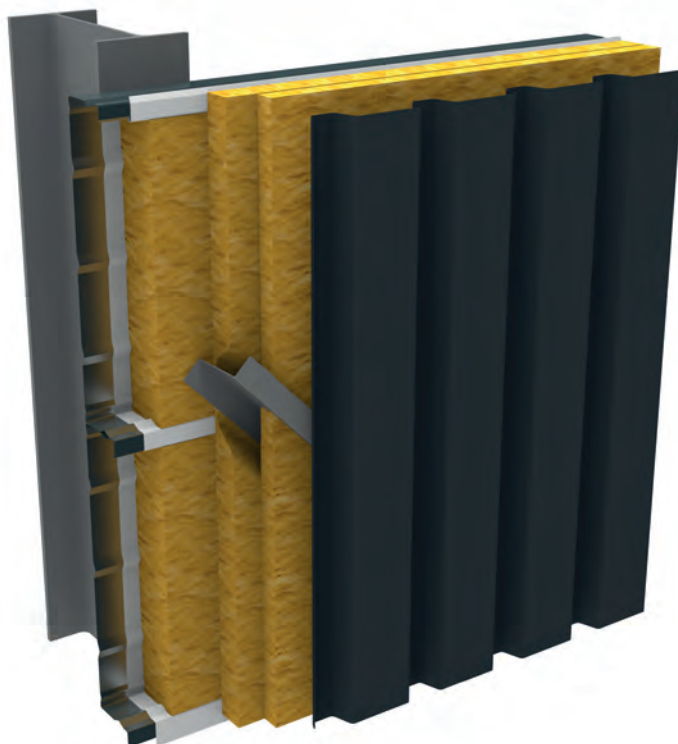
Production site Zwevezele, Belgium.



Vertical installation



Horizontal installation

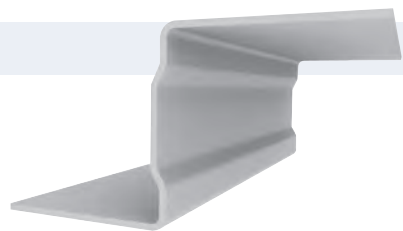


Secondary fixings

Fixing profile 30/40/50/60/70

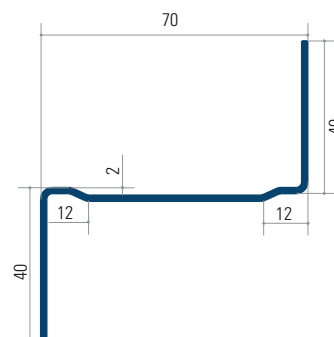
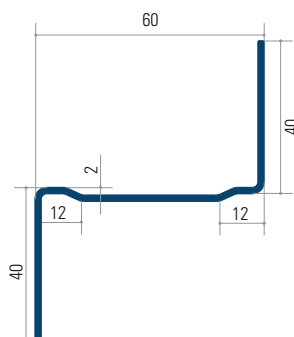
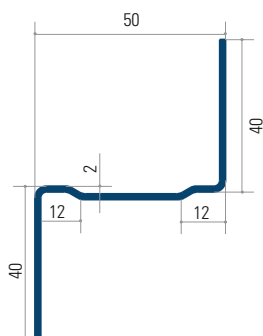
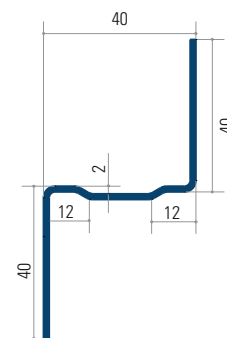
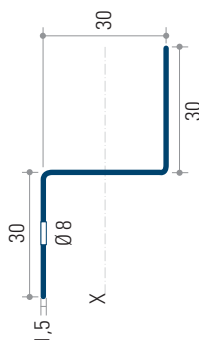
Production site Zwevezele, Belgium.

The fixing profiles are cold-formed galvanised profiles designed to provide secondary support for sheet metal cladding. Horizontal or vertical fixing is possible for example on cases, sandwich panels, sheet metal cladding, etc.



Technical Information

Gauge	Weight	I_x	W_x
mm	kg/m	cm ⁴	cm ³
30x30x30	1,03	2,04	1,38
40x40x40	1,37	5,08	2,54
40x50x40	1,49	8,35	3,34
40x60x40	1,61	12,59	4,19
40x70x40	1,73	17,84	5,10



Characteristics

Length	3030 mm, 4030 mm, 5030 mm and 6030 mm, perforated every 500 mm 4030, 4430, 4830, 5230, 6030, perforated every 400 mm Possibility to have a customised perforation
Steel quality	S280 GD
Finish	Galvanisation according to Sendzimir principle, 275 gr/m ² or 600 gr/m ² Non-oiled or similar hot-dip galvanisation EN 1461

Reference standards

Galvanised steel EN 10346 S280GD Z275

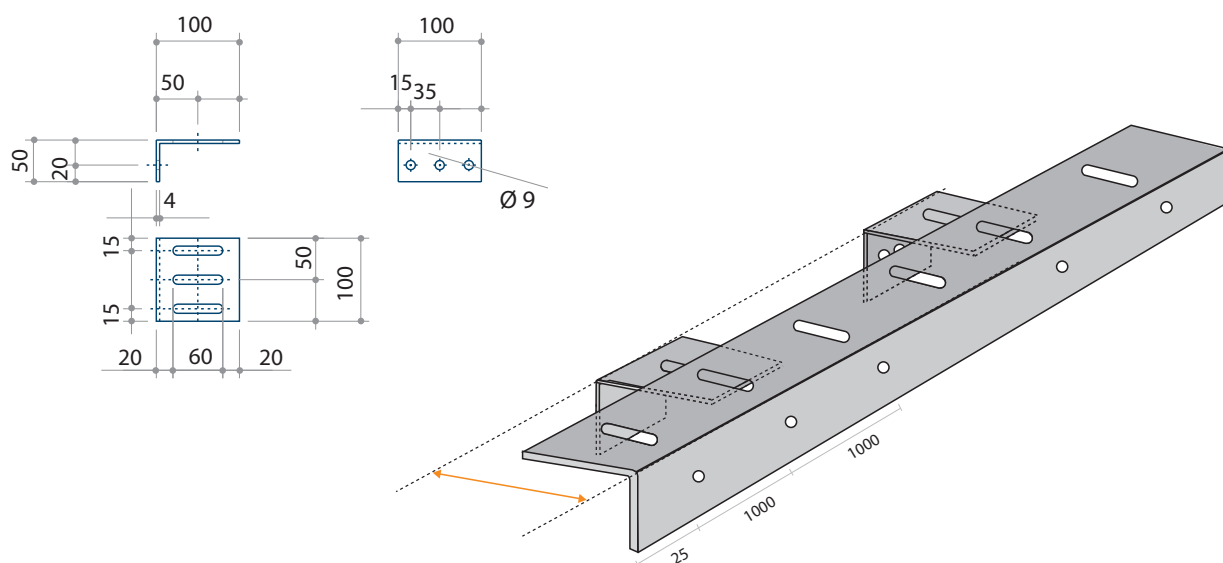
Secondary fixings

L-profile 50/100/2

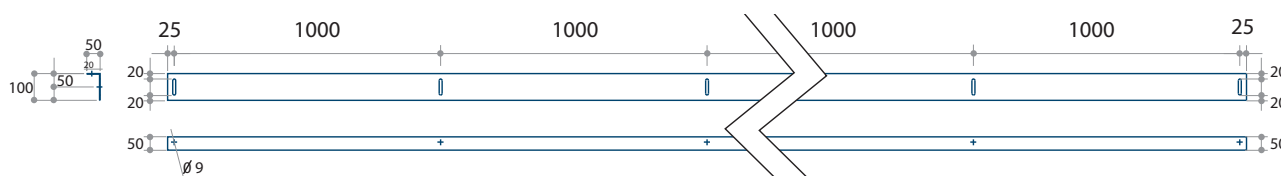
L-assembly/rail 50/100/4

Production site Zwevezele, Belgium.

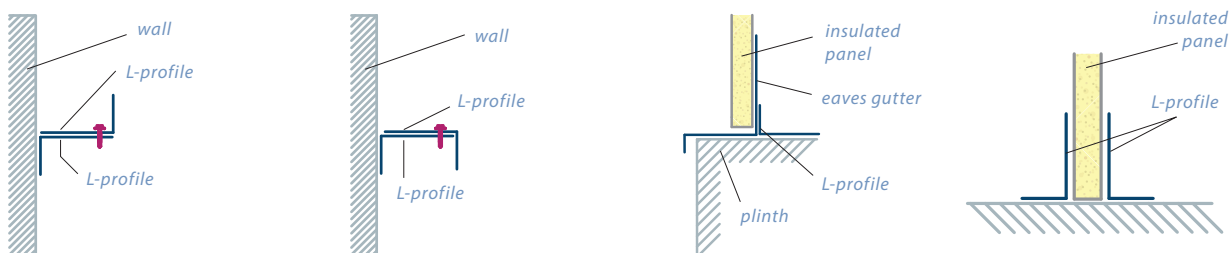
Adjustable fixing profile, horizontal or vertical assembly, used on metal construction, walls, concrete tie beam, to align the cladding and partitions.



Perforation - type A



Assembly examples

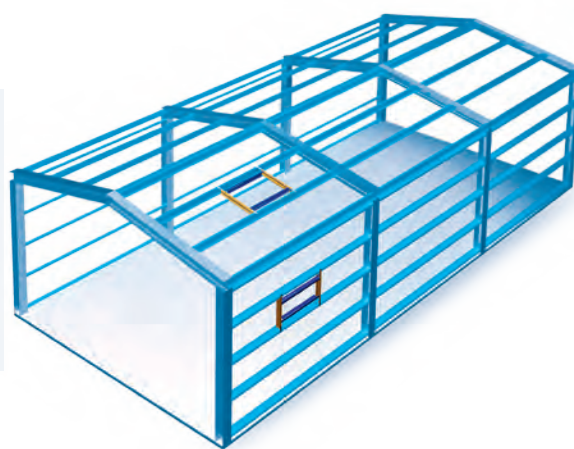


Characteristics

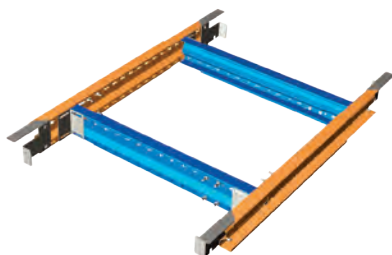
Profile-L 50/100/2	
Length	4m05, 5m05, 6m05
Gauge	2 mm
Cleat 50/100/4	
Gauge	4 mm

Roof and wall trimmer beam

The adjustable trimmer beam is installed between the purlins or rails and provides an optimised secondary structure for fixing skylights, smoke ducts, etc. The trimmer beam can be adjusted in accordance with the spacing of the purlins or rails. Simply choose a type from A to K, depending on the opening to be created. It is supplied partially assembled to reduce the installation time.



Adjustable system



Smaller opening

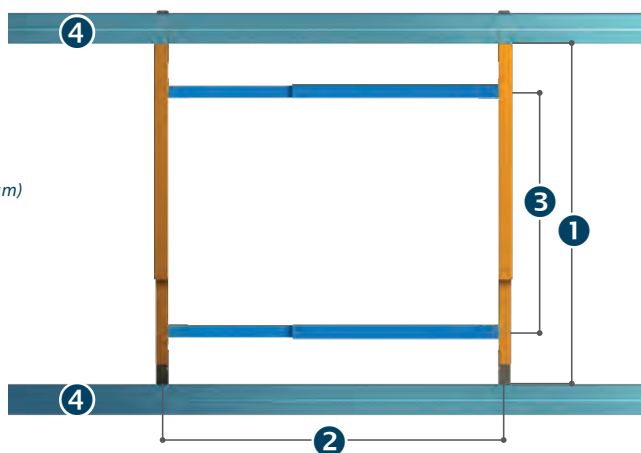


Wider opening

Options

Maximum useful load 250 kg

- 1. L Purlin distance
- 2. La Width of opening
- 3. L β Parallel opening from 0 mm (minimum) to purlin distance (maximum)
- 4. Purlin



Available types

	L = 1320 up to 1920	L = 1920 up to 2720	L = 2720 up to 3320
L α = 400 à 600	A	F	G
L α = 600 à 1000	B	H	I
L α = 900 à 1600	C	J	K
L α = 1600 à 2400	D	L	N
L α = 2400 à 3000	E	O	M

Folding

Galva folding

Specifications max. L ≤ 12000 mm

Unfolding	min. 100 mm, max. 1000 mm
Gauge	1,5 - 2 - 2,5 - 3 mm
Perforations	ø 8 - 10 - 12 - 14 - 18 - 20 mm (or slotted)*
Steel quality	galvanised sendzimir

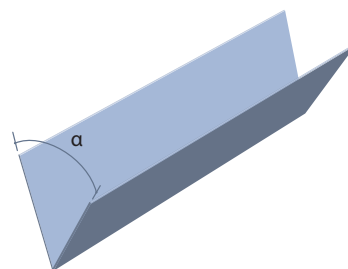
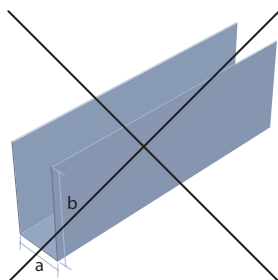
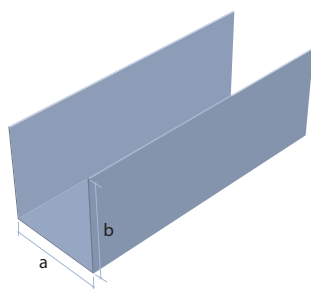
* Other perforations on request.

** Other perforations on request.

Specifications max. L ≤ 6000 mm

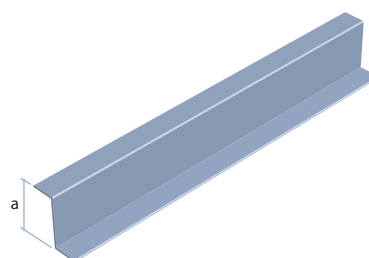
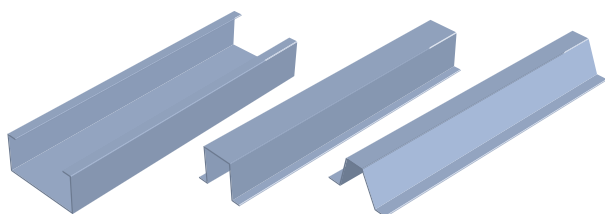
Unfolding	min. 100 mm, max. 1500 mm
Gauge	1,5 - 2 - 2,5 - 3 mm
Perforations	ø 8 - 10 - 12 - 14 - 18 - 20 mm (or slotted)**
Steel quality	galvanised sendzimir

Folding examples



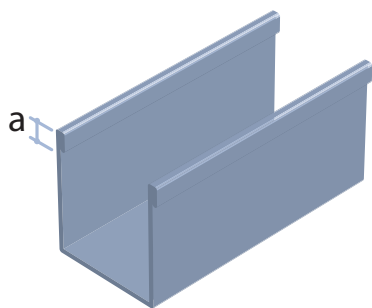
(a = b) = OK
(a < b) = not possible

$\alpha \geq 45^\circ$



For special demands, please contact us.

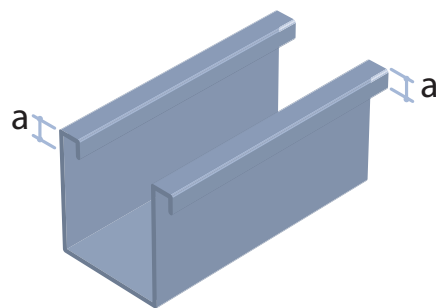
$L > 6000 = \alpha \geq 35$
 $L \leq 6000 = \alpha \geq 25$



Gauge

$$1,5 \text{ mm} = \alpha \geq 15$$

(Maximum gauge = 1,5 mm)

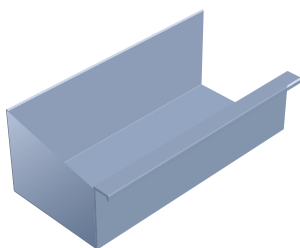
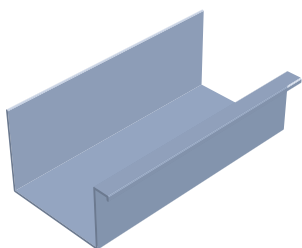


Gauge

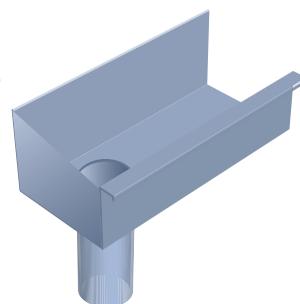
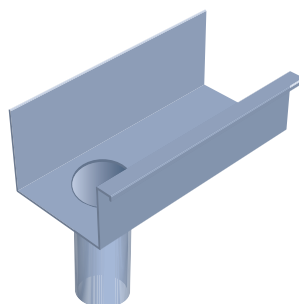
$$\begin{aligned} 1,5 \text{ mm} &= \alpha \geq 15 \\ 2,0 \text{ mm} &= \alpha \geq 20 \\ 2,5 \text{ mm} &= \alpha \geq 25 \\ 3,0 \text{ mm} &= \alpha \geq 30 \end{aligned}$$

Gutters

The welded joints are touched up using paint which is suitable for galvanisation.

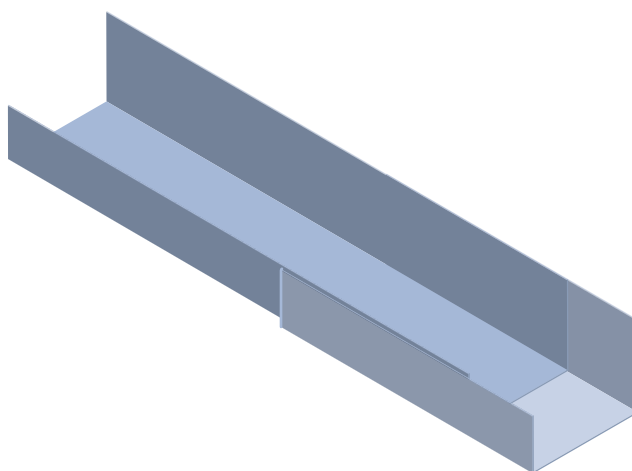


With or without end



With or without collector

Available diameters (in mm):
75 - 90 - 100 - 115
125 - 145 - 150 - 160
190 - 200 - 240 - 250



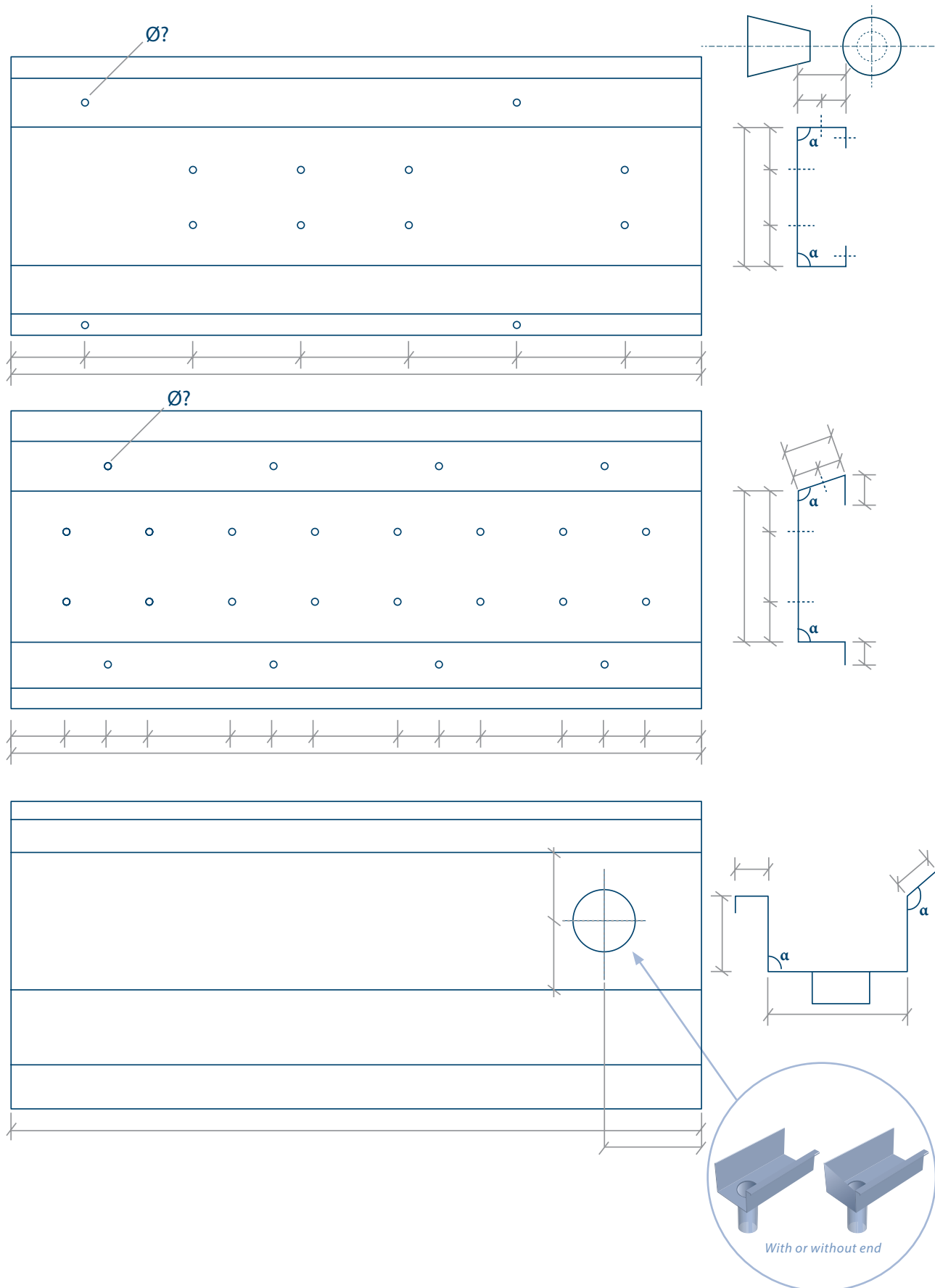
Fishplate with copper welds (CuSi)

Options

In addition to our range of cladding rails and roof purlins, we can also offer you:

- Gutter profiles
- Arch supports
- Special bends on request

Example of work drawing





Thanks to our wide range of purlins, almost any height can be build.



Purlins in combination with structural decking.



Detail view.



The Jorisode group can deliver complete solutions for all your needs.



Purlins in combination with a composite panel



Purlins in combination with a composite panel



Structure for commercial building



Sagbars with crimped end pieces



Renovation project



Purlin construction used in combination with solar panels



Industrial project



Our product range can be used in a wide range of applications and constructions



Joris Ide Ltd.

A9, Elmbridge Court, Gloucester GL3 1JZ, United Kingdom
T. +44 (0)1452 412 069 F. +44 (0)1452 358 025 sales@jorisode.co.uk

Joris Ide nv/sa

Hille 174, B-8750 Zwevezele, België
T. +32 (0) 51 61 07 77 F. +32 (0) 51 61 07 79 info@jorisode.be